

Channel	Dimmers	Instrument	Gel	Location	Focus
1	29	1 @ Strand Zoom 15°-32°		FOH #1	Warm wash SR
2	24	1 @ Strand Zoom 15°-32°		FOH #1	Warm wash MSR
3	18	1 @ Strand Zoom 15°-32°		FOH #1	Warm wash C
4	12	1 @ Strand Zoom 15°-32°		FOH #1	Warm wash MSL
5	6	1 @ Strand Zoom 15°-32°		FOH #1	Warm wash SL
6	28	1 @ Strand Zoom 15°-32°		FOH #1	Cool wash SR
7	22	1 @ Strand Zoom 15°-32°		FOH #1	Cool wash MSR
8	16	1 @ Strand Zoom 15°-32°		FOH #1	Cool wash C
9	10	1 @ Strand Zoom 15°-32°		FOH #1	Cool wash MSL
10	5	1 @ Strand Zoom 15°-32°		FOH #1	Cool wash SL
11	3.400	1 @ 19° S4 Lustr+		Box Boom	Box Boom LED HL High
12	3.410	1 @ 19° S4 Lustr+		Box Boom	Box Boom LED HL Mid
13	3.420	1 @ 26° S4 Lustr+		Box Boom	Box Boom LED HL Low
14	3.370	1 @ 19° S4 Lustr+		Box Boom	Box Boom LED HR High
15	3.380	1 @ 19° S4 Lustr+		Box Boom	Box Boom LED HR Mid
16	3.390	1 @ 26° S4 Lustr+		Box Boom	Box Boom LED HR Low
17	42	1 @ 19° S4	R# 387	Box Boom	Box Boom Cool HL High
18	44	1 @ 19° S4	R# 387	Box Boom	Box Boom Cool HL Mid
19	46	1 @ 26° S4	R# 387	Box Boom	Box Boom Cool HL Low
20	34	1 @ 19° S4	R# 387	Box Boom	Box Boom Cool HR High
21	36	1 @ 19° S4	R# 387	Box Boom	Box Boom Cool HR Mid
22	38	1 @ 26° S4	R# 387	Box Boom	Box Boom Cool HR Low
23	47	1 @ Strand Zoom 15°-32°		Box Boom	Bottom Rung Spec HL
24	39	1 @ Strand Zoom 15°-32°		Box Boom	Bottom Rung Spec HR
25	2.343	1 @ Varilite TSD		FOH #1A	FOH HR VL Face
26	2.316	1 @ Varilite TSD		FOH #1A	FOH C VL Face
27	2.289	1 @ Varilite TSD		FOH #1A	FOH HL VL Face
28					
29	13.91	1 @ 36° S4 Lustr+	LED	Sub SR	Foot / Side
30	10.1	1 @ 36° S4 Lustr+	LED	Sub SL	Foot / Side
31	27	1 @ Strand Zoom 15°-32°		FOH #1	Face Special 1 SR
32	25	1 @ Strand Zoom 15°-32°		FOH #1	Face Special 2
33	23	1 @ Strand Zoom 15°-32°		FOH #1	Face Special 3
34	21	1 @ Strand Zoom 15°-32°		FOH #1	Face Special 4
35	20	1 @ Strand Zoom 15°-32°		FOH #1	Face Special 5
36	19	1 @ Strand Zoom 15°-32°		FOH #1	Face Special 6
37	17	1 @ Strand Zoom 15°-32°		FOH #1	Face Special 7 CS
38	15	1 @ Strand Zoom 15°-32°		FOH #1	Face Special 8
39	14	1 @ Strand Zoom 15°-32°		FOH #1	Face Special 9
40	13	1 @ Strand Zoom 15°-32°		FOH #1	Face Special 10

41	11	1 @ Strand Zoom 15°-32°		FOH #1	Face Special 11
42	9	1 @ Strand Zoom 15°-32°		FOH #1	Face Special 12
43	8	1 @ Strand Zoom 15°-32°		FOH #1	Face Special 13
44	7	1 @ Strand Zoom 15°-32°		FOH #1	Face Special 14SL
45	76	1 @ 26° S4		1st LX	Face Special USR
46	74	1 @ 26° S4		1st LX	Face Special USRC
47	71	1 @ 26° S4		1st LX	Face Special USLC
48	69	1 @ 26° S4		1st LX	Face Special USL
49					
50					
51	4.51	1 @ 36° S4 Lustr+		Concert Pipe	CP Tip SR Offstage
52	4.41	1 @ 26° S4 Lustr+		Concert Pipe	CP Tip SR Onstage
53	5.51	1 @ 36° S4 Lustr+		1st LX	1st Tip SR Offstage
54	5.41	1 @ 26° S4 Lustr+		1st LX	1st Tip SR Onstage
55	7.51	1 @ 36° S4 Lustr+		2nd LX	2nd Tip SR Offstage
56	7.41	1 @ 26° S4 Lustr+		2nd LX	2nd Tip SR Onstage
57	9.51	1 @ 36° S4 Lustr+		3rd LX	3rd Tip SR Offstage
58	9.41	1 @ 26° S4 Lustr+		3rd LX	3rd Tip SR Onstage
59	12.51	1 @ 36° S4 Lustr+		4th LX	4th Tip SR Offstage
60	12.41	1 @ 26° S4 Lustr+		4th LX	4th Tip SR Onstage
61	4.11	1 @ 26° S4 Lustr+		Concert Pipe	CP Tip SL Onstage
62	4.1	1 @ 36° S4 Lustr+		Concert Pipe	CP Tip SL Offstage
63	5.11	1 @ 26° S4 Lustr+		1st LX	1st Tip SL Onstage
64	5.1	1 @ 36° S4 Lustr+		1st LX	1st Tip SL Offstage
65	7.11	1 @ 26° S4 Lustr+		2nd LX	2nd Tip SL Onstage
66	7.1	1 @ 36° S4 Lustr+		2nd LX	2nd Tip SL Offstage
67	9.11	1 @ 26° S4 Lustr+		3rd LX	3rd Tip SL Onstage
68	9.1	1 @ 36° S4 Lustr+		3rd LX	3rd Tip SL Offstage
69	12.11	1 @ 26° S4 Lustr+		4th LX	4th Tip SL Onstage
70	12.1	1 @ 36° S4 Lustr+		4th LX	4th Tip SL Offstage
71	4.31	1 @ 36° S4 Lustr+		Concert Pipe	CP B/U SR
72	5.31	1 @ 36° S4 Lustr+		1st LX	1st B/U SR
73	7.31	1 @ 36° S4 Lustr+		2nd LX	2nd B/U SR
74	9.31	1 @ 36° S4 Lustr+		3rd LX	3rd B/U SR
75	4.21	1 @ 36° S4 Lustr+		Concert Pipe	CP B/U SL
76	5.21	1 @ 36° S4 Lustr+		1st LX	1st B/U SL
77	7.21	1 @ 36° S4 Lustr+		2nd LX	2nd B/U SL
78	9.21	1 @ 36° S4 Lustr+		3rd LX	3rd B/U SL
79					
80					

81	81	1 @ 50° S4		1st LX	1st 50 DSR
82	117	1 @ 50° S4		2nd LX	2nd 50 MSR
83	153	1 @ 50° S4		3rd LX	3rd 50 USR
84	64	1 @ 50° S4		1st LX	1st 50 DSL
85	100	1 @ 50° S4		2nd LX	2nd 50 MSL
86	136	1 @ 50° S4		3rd LX	3rd 50 USL
87	193	1 @ 19° S4		4th LX	USR Back Special USR
88	189	1 @ 19° S4		4th LX	USC Back Special USC
89	185	1 @ 19° S4		4th LX	USL Back Special USL
90					
91	5.381	1 @ ETC LED Series 2 Tungsten HD		1st LX	1st LED Back SR
92	5.371	1 @ ETC LED Series 2 Tungsten HD		1st LX	1st LED Back CSR
93	5.361	1 @ ETC LED Series 2 Tungsten HD		1st LX	1st LED Back CSL
94	5.351	1 @ ETC LED Series 2 Tungsten HD		1st LX	1st LED Back SL
95	7.121	1 @ ETC LED Series 2 Tungsten HD		2nd LX	2nd LED Back SR
96	7.111	1 @ ETC LED Series 2 Tungsten HD		2nd LX	2nd LED Back CSR
97	7.101	1 @ ETC LED Series 2 Tungsten HD		2nd LX	2nd LED Back CSL
98	7.91	1 @ ETC LED Series 2 Tungsten HD		2nd LX	2nd LED Back SL
99	9.381	1 @ ETC LED Series 2 Tungsten HD		3rd LX	3rd LED Back SR
100	9.371	1 @ ETC LED Series 2 Tungsten HD		3rd LX	3rd LED Back CSR
101	9.361	1 @ ETC LED Series 2 Tungsten HD		3rd LX	3rd LED Back CSL
102	9.351	1 @ ETC LED Series 2 Tungsten HD		3rd LX	3rd LED Back SL
103	12.381	1 @ ETC LED Series 2 Tungsten HD		4th LX	4th LED Back SR
104	12.371	1 @ ETC LED Series 2 Tungsten HD		4th LX	4th LED Back CSR
105	12.361	1 @ ETC LED Series 2 Tungsten HD		4th LX	4th LED Back CSL
106	12.351	1 @ ETC LED Series 2 Tungsten HD		4th LX	4th LED Back SL
107					
108					
109					
110					
111	79	1 @ 6" Fresnels	V99	1st LX	1st Cool Back SR
112	75	1 @ 6" Fresnels	V99	1st LX	1st Cool Back CSR
113	70	1 @ 6" Fresnels	V99	1st LX	1st Cool Back CSL
114	65	1 @ 6" Fresnels	V99	1st LX	1st Cool Back SL
115	115	1 @ 6" Fresnels	V99	2nd LX	2nd Cool Back SR
116	110	1 @ 6" Fresnels	V99	2nd LX	2nd Cool Back CSR
117	106	1 @ 6" Fresnels	V99	2nd LX	2nd Cool Back CSL
118	101	1 @ 6" Fresnels	V99	2nd LX	2nd Cool Back SL
119	151	1 @ 6" Fresnels	V99	3rd LX	3rd Cool Back SR
120	146	1 @ 6" Fresnels	V99	3rd LX	3rd Cool Back CSR

121	142	1 @ 6" Fresnels	V99	3rd LX	3rd Cool Back CSL
122	137	1 @ 6" Fresnels	V99	3rd LX	3rd Cool Back SL
123	195	1 @ 6" Fresnels	V99	4th LX	4th Cool Back SR
124	191	1 @ 6" Fresnels	V99	4th LX	4th Cool Back CSR
125	187	1 @ 6" Fresnels	V99	4th LX	4th Cool Back CSL
126	183	1 @ 6" Fresnels	V99	4th LX	4th Cool Back SL
127					
128					
129					
130					
131	131	1 @ S4 Par - Narrow		Line 16 in	Pars 1 SR IN
132	130	1 @ S4 Par - Narrow		Line 16 in	Pars 1 MSR IN
133	127	1 @ S4 Par - Narrow		Line 16 in	Pars 1 CSR IN
134	126	1 @ S4 Par - Narrow		Line 16 in	Pars 1 CSL IN
135	123	1 @ S4 Par - Narrow		Line 16 in	Pars 1 MSL IN
136	122	1 @ S4 Par - Narrow		Line 16 in	Pars 1 SL IN
137	132	1 @ S4 Par - Narrow		Line 16 out	Pars 2 SR OUT
138	129	1 @ S4 Par - Narrow		Line 16 out	Pars 2 MSR OUT
139	128	1 @ S4 Par - Narrow		Line 16 out	Pars 2 CSR OUT
140	125	1 @ S4 Par - Narrow		Line 16 out	Pars 2 CSL OUT
141	124	1 @ S4 Par - Narrow		Line 16 out	Pars 2 MSL OUT
142	121	1 @ S4 Par - Narrow		Line 16 out	Pars 2 SL OUT
143	150	1 @ S4 Par - Narrow		3rd LX	Pars 3 SR
144	148	1 @ S4 Par - Narrow		3rd LX	Pars 3 MSR
145	145	1 @ S4 Par - Narrow		3rd LX	Pars 3 CSR
146	143	1 @ S4 Par - Narrow		3rd LX	Pars 3 CSL
147	141	1 @ S4 Par - Narrow		3rd LX	Pars 3 MSL
148	139	1 @ S4 Par - Narrow		3rd LX	Pars 3 SL
149	194	1 @ S4 Par - Narrow		4th LX	Pars 4 SR
150	192	1 @ S4 Par - Narrow		4th LX	Pars 4 MSR
151	190	1 @ S4 Par - Narrow		4th LX	Pars 4 CSR
152	188	1 @ S4 Par - Narrow		4th LX	Pars 4 CSL
153	186	1 @ S4 Par - Narrow		4th LX	Pars 4 MSL
154	184	1 @ S4 Par - Narrow		4th LX	Pars 4 SL
155					
156					
157					
158					
159					
160					

161	6.204	1 @ Chauvet COLORado 2-Quad Z Tour	LED	1A	LED Pars SR
162	6.187	1 @ Chauvet COLORado 2-Quad Z Tour	LED	1A	LED Pars SL
163	7.425	1 @ Chauvet COLORado 2-Quad Z Tour	LED	2nd LX	LED Pars SR
164	7.408	1 @ Chauvet COLORado 2-Quad Z Tour	LED	2nd LX	LED Pars CSR
165	7.391	1 @ Chauvet COLORado 2-Quad Z Tour	LED	2nd LX	LED Pars CSL
166	7.374	1 @ Chauvet COLORado 2-Quad Z Tour	LED	2nd LX	LED Pars SL
167	8.306	1 @ Chauvet COLORado 2-Quad Z Tour	LED	2A	LED Pars SR
168	8.289	1 @ Chauvet COLORado 2-Quad Z Tour	LED	2A	LED Pars MSR
169	8.272	1 @ Chauvet COLORado 2-Quad Z Tour	LED	2A	LED Pars CSR
170	8.255	1 @ Chauvet COLORado 2-Quad Z Tour	LED	2A	LED Pars CSL
171	8.238	1 @ Chauvet COLORado 2-Quad Z Tour	LED	2A	LED Pars MSL
172	8.221	1 @ Chauvet COLORado 2-Quad Z Tour	LED	2A	LED Pars SL
173					
174					
175					
176					
177					
178					
179					
180					
181					
182					
183					
184					
185					
186					
187					
188					
189					
190					
191					
192					
193					
194					
195					
196					
197					
198					
199					
200					

201	5.145 + 1.77	1 @ Varilite TS	RGB	1st LX	Back Special 1 DSR
202	5.118 + 1.72	1 @ Varilite TS	RGB	1st LX	Back Special 2 DSC
203	5.91 + 1.68	1 @ Varilite TS	RGB	1st LX	Back Special 3 DSL
204	7.226 + 1.113	1 @ Varilite TS	RGB	2nd LX	Back Special 4 MSR
205	7.199 + 1.108	1 @ Varilite TS	RGB	2nd LX	Back Special 5 MSC
206	7.172 + 1.104	1 @ Varilite TS	RGB	2nd LX	Back Special 6 MSL
207	9.307 + 1.149	1 @ Varilite TS	RGB	3rd LX	Back Special 7 USR
208	9.280 + 1.144	1 @ Varilite TS	RGB	3rd LX	Back Special 8 USC
209	9.253 + 1.140	1 @ Varilite TS	RGB	3rd LX	Back Special 9 USL
210					
211	13.348	1 @ Impression Spot One	LED	DECK	GLP 1
212	13.326	1 @ Impression Spot One	LED	DECK	GLP 2
213	13.285	1 @ Impression Spot One	LED	DECK	GLP 3
214	13.253	1 @ Impression Spot One	LED	DECK	GLP 4
215					
216					
217					
218					
219					
220					
221	271, 276, 281	6 @ Altman FC1	RGB	Deck	Groundrow SR
222	270, 275, 280	6 @ Altman FC1	RGB	Deck	Groundrow CSR
223	269, 274, 279	6 @ Altman FC1	RGB	Deck	Groundrow CS
224	268, 273, 278	6 @ Altman FC1	RGB	Deck	Groundrow CSL
225	267, 272, 277	3 @ Altman FC1	RGB	Deck	Groundrow SL
226					
227					
228					
229					
230					
231	177, 178, 179, 180	8 @ Iris	RGBA	Cyc LX	Top Cyc SR
232	173, 174, 175, 176	8 @ Iris	RGBA	Cyc LX	Top Cyc C
233	169, 170, 171, 172	8 @ Iris	RGBA	Cyc LX	Top Cyc SL
234					
235					
236					
237					
238					
239					
240					

241	13.245	1 @ Spectra 100 Cyc	LED	Deck	LED Ground Row SR
242	13.235	1 @ Spectra 100 Cyc	LED	Deck	LED Ground Row MSR
243	13.225	1 @ Spectra 100 Cyc	LED	Deck	LED Ground Row CMSR
244	13.215	1 @ Spectra 100 Cyc	LED	Deck	LED Ground Row CSR
245	13.205	1 @ Spectra 100 Cyc	LED	Deck	LED Ground Row CSL
246	13.195	1 @ Spectra 100 Cyc	LED	Deck	LED Ground Row CMSL
247	13.185	1 @ Spectra 100 Cyc	LED	Deck	LED Ground Row MSL
248	13.175	1 @ Spectra 100 Cyc	LED	Deck	LED Ground Row SL
249					
250					
251	11.366	1 @ Spectra 200 cyc	LED	Cyc LX	LED CYC SR
252	11.358	1 @ Spectra 200 cyc	LED	Cyc LX	LED CYC MSR
253	11.350	1 @ Spectra 200 cyc	LED	Cyc LX	LED CYC C
254	11.342	1 @ Spectra 200 cyc	LED	Cyc LX	LED CYC MSL
255	11.334	1 @ Spectra 200 cyc	LED	Cyc LX	LED CYC SL
256					
257					
258					
259					
260					
261	1.032	1 @ Strand Zoom 15°-32°	OW	FOH Catwalk	House Left steps
262	1.031	1 @ Strand Zoom 15°-32°	OW	FOH Catwalk	House Left
263	1.030	1 @ Strand Zoom 15°-32°	OW	FOH Catwalk	House Left
264	1.004	1 @ Strand Zoom 15°-32°	OW	FOH Catwalk	House Right
265	1.003	1 @ Strand Zoom 15°-32°	OW	FOH Catwalk	House Right
266	1.002	1 @ Strand Zoom 15°-32°	OW	FOH Catwalk	House Right steps
267					
268					
269					
270					
271	1.059	1 @ S4 Par - Wide	OW	CP	SR Top light
272	1.056	1 @ S4 Par - Wide	OW	CP	SR Top light
273	1.055	1 @ S4 Par - Wide	OW	CP	CSR Top light
274	1.052	1 @ S4 Par - Wide	OW	CP	CSL Top light
275	1.053	1 @ S4 Par - Wide	OW	CP	SL Top light
276	1.050	1 @ S4 Par - Wide	OW	CP	SL Top light
277					
278					
279					
280					

281	26	1 @ Strand Zoom 15°-32°		FOH #1	M/C Special SR
282					
283	51, 54, 58	2 @ 26° S4	O/W	Concert Pipe	Big Ticket Logos
284	287	S4 36, S4 26		FOH #2	Aisle House Left
285	286	S4 36, S4 26		FOH #2	Aisle House Right
286	X.498	1 @ LED Shadow 3 Channel		Box Boom	Black Light
287	X.495	1 @ LED Shadow 3 Channel		Box Boom	Black Light
288	X.505	1 @ Atomic 3000 4CH 60hz		Box Boom	Strobe
289	X.501	1 @ Atomic 3000 4CH 60hz		Box Boom	Strobe
290	X.489	1 @ UltraTec Fogger			Fogger
291	x.493	1 @ UltraTec Fogger			Fogger
292	X.509	1 @ MB DMX 2 Channel			MB Motor
293	X.511	2 @ Radience Hazer 2 Channel		USC	Haze
294	13.485	1 @ Ultratech FOG 1		Deck	FOG 1
295	13.487	1 @ Ultratech FOG 2		Deck	FOG 2
296					
297	1	2 @ 26° SL	R46	FOH	Curtain Warmers
298	x.492	4 @ Works		Up/Down	Offstage Works
299	5.491 + 7.491	4 @ Works		1st, 2nd	DS Works
300	9.491 + 12.491	4 @ Works		3rd, 4th	US Works
301	253	1 @ 36° S4		SR Prosc Boom	DSR Side 1
302	223	1 @ 36° S4		SR Boom 1	MSR Side 1
303	229	1 @ 36° S4		SR Boom 2	MSR Side 1
304	235	1 @ 36° S4		SR Boom 3	USR Side 1
305	241	1 @ 36° S4		SR Boom 4	USR Side 1
306	247	1 @ 36° S4		SL Prosc Boom	DSL Side 1
307	199	1 @ 36° S4		SL Boom 1	MSL Side 1
308	205	1 @ 36° S4		SL Boom 2	MSL Side 1
309	211	1 @ 36° S4		SL Boom 3	USL Side 1
310	217	1 @ 36° S4		SL Boom 4	USL Side 1
311	254	1 @ 36° S4		SR Prosc Boom	DSR Side 2
312	225	1 @ 36° S4		SR Boom 1	MSR Side 2
313	231	1 @ 36° S4		SR Boom 2	MSR Side 2
314	237	1 @ 36° S4		SR Boom 3	USR Side 2
315	243	1 @ 36° S4		SR Boom 4	USR Side 2
316	248	1 @ 36° S4		SL Prosc Boom	DSL Side 2
317	201	1 @ 36° S4		SL Boom 1	MSL Side 2
318	207	1 @ 36° S4		SL Boom 2	MSL Side 2
319	213	1 @ 36° S4		SL Boom 3	USL Side 2
320	219	1 @ 36° S4		SL Boom 4	USL Side 2

321	255	1 @ 36° S4		SR Prosc Boom	DSR Mid
322	227	1 @ 36° S4		SR Boom 1	MSR Mid
323	233	1 @ 36° S4		SR Boom 2	MSR Mid
324	239	1 @ 36° S4		SR Boom 3	USR Mid
325	245	1 @ 36° S4		SR Boom 4	USR Mid
326	249	1 @ 36° S4		SL Prosc Boom	DSL Mid
327	203	1 @ 36° S4		SL Boom 1	MSL Mid
328	209	1 @ 36° S4		SL Boom 2	MSL Mid
329	215	1 @ 36° S4		SL Boom 3	USL Mid
330	221	1 @ 36° S4		SL Boom 4	USL Mid
331	256	1 @ 36° S4		SR Prosc Boom	DSR Shin
332	228	1 @ 36° S4		SR Boom 1	MSR Shin
333	234	1 @ 36° S4		SR Boom 2	MSR Shin
334	240	1 @ 36° S4		SR Boom 3	USR Shin
335	246	1 @ 36° S4		SR Boom 4	USR Shin
336	250	1 @ 36° S4		SL Prosc Boom	DSL Shin
337	204	1 @ 36° S4		SL Boom 1	MSL Shin
338	210	1 @ 36° S4		SL Boom 2	MSL Shin
339	216	1 @ 36° S4		SL Boom 3	USL Shin
340	222	1 @ 36° S4		SL Boom 4	USL Shin
341					
342					
343					
344					
345					
600					
601	13.150	1 @ Astra S7 Dim Spot	RGB	Deck	Wireless Par Spot/Accent
602	13.143	1 @ Astra S7 Dim Spot	RGB	Deck	Wireless Par Spot/Accent
603	13.136	1 @ Astra S7 Dim Spot	RGB	Deck	Wireless Par Spot/Accent
604	13.129	1 @ Astra S7 Dim Spot	RGB	Deck	Wireless Par Spot/Accent
605	13.122	1 @ Astra S7 Dim Spot	RGB	Deck	Wireless Par Spot/Accent
606	13.115	1 @ Astra S7 Dim Spot	RGB	Deck	Wireless Par Spot/Accent
607	13.108	1 @ Astra S7 Dim Spot	RGB	Deck	Wireless Par Spot/Accent
608	13.101	1 @ Astra S7 Dim Spot	RGB	Deck	Wireless Par Spot/Accent
609					
610					
611	18.1	1 @ Follow Spot #1		BOOTH	R.J. Roxie LED
612	18.3	1 @ Follow Spot #2		BOOTH	R.J. Roxie LED
613	18.5	1 @ Follow Spot #3		BOOTH	R.J. Roxie LED

401-420	14.1-14.153	House Lights	DMX footprint (8)	OW	Auditorium	Seating
---------	-------------	--------------	-------------------	----	------------	---------

Front of House					
NUMBER	CHANNEL	DIMMERS	INSTRUMENT	GEL	FOCUS
1	197	1	Strand Zoom 15°-32°	R#46	Curtain Wash
2	266	2	Strand Zoom 15°-32°		Steps
3	265	3	Strand Zoom 15°-32°		
4	264	4	Strand Zoom 15°-32°		
5	10	5	Strand Zoom 15°-32°		Cool Wash DSL
6	5	6	Strand Zoom 15°-32°		Warm Wash DSL
7	84	7	Strand Zoom 15°-32°	R#05	Face Special
8	83	8	Strand Zoom 15°-32°	R#05	Face Special
9	82	9	Strand Zoom 15°-32°	R#05	Face Special
10	9	10	Strand Zoom 15°-32°		Cool Wash MDSL
11	81	11	Strand Zoom 15°-32°	R#05	Face Special
12	4	12	Strand Zoom 15°-32°		Warm Wash MDSL
13	80	13	Strand Zoom 15°-32°	R#05	Face Special
14	79	14	Strand Zoom 15°-32°	R#05	Face Special
15	78	15	Strand Zoom 15°-32°	R#05	Face Special
16	8	16	Strand Zoom 15°-32°		Warm Wash DSC
17	77	17	Strand Zoom 15°-32°	R#05	Face Special
18	3	18	Strand Zoom 15°-32°		Cool Wash DSC
19	76	19	Strand Zoom 15°-32°	R#05	Face Special
20	75	20	Strand Zoom 15°-32°	R#05	Face Special
21	74	21	Strand Zoom 15°-32°	R#05	Face Special
22	7	22	Strand Zoom 15°-32°		Warm Wash MDSR
23	73	23	Strand Zoom 15°-32°	R#05	Face Special
24	2	24	Strand Zoom 15°-32°		Cool Wash MDSR
25	72	25	Strand Zoom 15°-32°	R#05	Face Special
26	203	26	Strand Zoom 15°-32°	R#05	MC Special
27	71	27	Strand Zoom 15°-32°	R#05	Face Special
28	6	28	Strand Zoom 15°-32°		Warm Wash DSR
29	1	29	Strand Zoom 15°-32°		Cool Wash DSL
30	263	30	Strand Zoom 15°-32°		
31	262	31	Strand Zoom 15°-32°		
32	261	32	Strand Zoom 15°-32°		Steps
33	197	1	Strand Zoom 15°-32°	R#46	Curtain Wash

Front of House Winch - Universe 2					
NUMBER	CHANNEL	DIMMERS	INSTRUMENT	GEL	FOCUS
1	13	2.343	VL 1100 TSD	RGB	VL TSD SR
2	12	2.316	VL 1100 TSD	RGB	VL TSD CS
3	11	2.289	VL 1100 TSD	RGB	VL TSD SL

House Left Box Boom - Universe 3					
NUMBER	CHANNEL	DIMMERS	INSTRUMENT	GEL	FOCUS
1	11	3.400	19° S4 Lustr +	LED	Box Boom LED HL
2	17	42	19° S4	R#387	Box Boom Cool HL
3	12	3.410	19° S4 Lustr +	LED	Box Boom LED HL
4	18	44	19° S4	R#387	Box Boom Cool HL
5	13	3.420	26° S4 Lustr+	LED	Box Boom LED HL
6	19	46	26° S4	R#387	Box Boom Cool HL
7	23	47	Strand Zoom 15°-32°		Bottom Rung Spec

House Right Box Boom - Universe 3					
NUMBER	CHANNEL	DIMMERS	INSTRUMENT	GEL	FOCUS
1	14	3.370	19° S4 Lustr +	LED	Box Boom LED HR
2	20	34	19° S4	R#387	Box Boom Cool HR
3	15	3.380	19° S4 Lustr +	LED	Box Boom LED HR
4	21	36	19° S4	R#387	Box Boom Cool HR
5	16	3.390	26° S4 Lustr+	LED	Box Boom LED HR
6	22	38	26° S4	R#387	Box Boom Cool HR
7	24	39	Strand Zoom 15°-32°		Bottom Rung Spec

Concert Pipe - Universe 4					
NUMBER	CHANNEL	DIMMERS	INSTRUMENT	GEL	FOCUS
1	62	4.1	36° S4 Lustr +	LED	CP Tip SL
2	61	4.11	26° S4 Lustr +	LED	CP Tip SL
3	71	4.21	36° S4 Lustr +	LED	CP B/U SL
4	276	50	S4 PAR - Wide	O/W	Top light
5	283	51	26° S4	O/W	Big Ticket Logos
6	275	53	S4 PAR - Wide	O/W	Top light
7	274	52	S4 PAR - Wide		Top light
8	283	54	19° S4	O/W	Spnsor Logos
9	273	55	S4 PAR - Wide	O/W	Top light
10	272	56	S4 PAR - Wide	O/W	Top light
11	283	58	26° S4	O/W	Big Ticket Logos
12	271	59	S4 PAR - Wide	O/W	Top light
13	75	4.31	36° S4 Lustr +	LED	CP B/U SR
14	52	4.41	26° S4 Lustr +	LED	CP Tip SR
15	51	4.51	36° S4 Lustr +	LED	CP Tip SR

1st LX - Universe 5						
NUMBER	CHANNEL	DIMMERS	INSTRUMENT	GEL	FOCUS	
1	64	5.1	36° S4 Lustr +	LED	1st Tip SL	
2	63	5.11	26° S4 Lustr +	LED	1st Tip SL	
3	76	5.21	36° S4 Lustr +	LED	1st B/U SL	
4	84	64	50° S4		1st 50 SL	
5	114	65	6" Fresnels	LV99	1st Cool Back	
6	94	5.351	LED 6" Fresnels HD	LED	1st Warm Back	
7	203	5.91 + 1.68	Varilite TS	RGB	Back Special 4 MSL	
8		69.00	26° S4		US Face SL	
9	113	70	6" Fresnels	LV99	1st Cool Back	
10	93	5.361	LED 6" Fresnels HD	LED	1st Warm Back	
11		71	26° S4		US Face MSL	
12	202	5.118 +1.72	Varilite TS	RGB	Back Special 4 MSC	
13		74.000	26° S4		US Face MSR	
14	112	73	6" Fresnels	LV99	1st Cool Back	
15	92	5.371	LED 6" Fresnels HD	LED	1st Warm Back	
16		76	26° S4		US Face SR	
17	201	5.145 + 1.77	Varilite TS	RGB	Back Special 4 MSR	
18	111	75.000	6" Fresnels	LR99	1st Cool Back	
19	91	5.381	LED 6" Fresnels HD	LED	1st Warm Back	
20	81	81	50° S4		1st 50 SR	
22	72	5.31	26° S4 Lustr +	LED	1st B/U SR	
23	54	5.41	36° S4 Lustr +	LED	1st Tip SR	
24	53	5.51	36° S4 Lustr +	LED	1st Tip SR	

1A LX - Universe 6						
NUMBER	CHANNEL	DIMMERS	INSTRUMENT	GEL	FOCUS	
1	164	6.187	Colorado	LED	LED Pars 1	
2	163	6.221	Colorado	LED	LED Pars 1	
3	162	6.306	Colorado	LED	LED Pars 1	
4	161	6.204	Colorado	LED	LED Pars 1	

2nd LX - Universe 7						
NUMBER	CHANNEL	DIMMERS	INSTRUMENT	GEL	FOCUS	
1	66	7.1	36° S4 Lustr +	LED	2nd Tip SL	
2	65	7.11	26° S4 Lustr +	LED	2nd Tip SL	
3	77	7.21	36° S4 Lustr +	LED	2nd B/U SL	
4	85	100	50° S4		2nd 50 SL	

5	118	101	6" Fresnels	LV99	2nd Cool Back
6	98	7.91	LED 6" Fresnels HD	LED	2nd Warm Back
7	206	7.172 + 1.104	Varilite TS	RGB	Back Special 4 MSL
8	168	7.374	Colorado	LED	LED Pars 1
9	117	106	6" Fresnels	LV99	2nd Cool Back
10	97	7.101	LED 6" Fresnels HD	LED	2nd Warm Back
11	167	7.391	Colorado	LED	LED Pars 1
12	205	7.199 + 1.108	Varilite TS	RGB	Back Special 4 MSC
13	166	7.408	Colorado	LED	LED Pars 1
14	116	110	6" Fresnels	LV99	2nd Cool Back
15	96	7.111	LED 6" Fresnels HD	LED	2nd Warm Back
16	165	7.425	Colorado	LED	LED Pars 1
17	204	7.226 + 1.113	Varilite TS	RGB	Back Special 4 MSR
18	115	115	6" Fresnels	LV99	2nd Cool Back
19	95	7.121	LED 6" Fresnels HD	LED	2nd Warm Back
20	82	117	50° S4		2nd 50 SR
21	73	7.31	36° S4 Lustr +	LED	2nd B/U SR
22	56	7.41	26° S4 Lustr +	LED	2nd Tip SR
23	55	7.51	36° S4 Lustr +	LED	2nd Tip SR

2A LX - Universe 8

NUMBER	CHANNEL	DIMMERS	INSTRUMENT	GEL	FOCUS
1	142	121	S4 Par		Pars 2
2	136	122	S4 Par		Pars 1
3	135	123	S4 Par		Pars 1
4	141	124	S4 Par		Pars 2
5	171	8.238	Colorado	LED	LED Pars 2
6	170	8.255	Colorado	LED	LED Pars 2
7	140	125	S4 Par		Pars 2
8	134	126	S4 Par		Pars 1
9	133	127	S4 Par		Pars 1
10	139	128	S4 Par		Pars 2
11	169	8.272	Colorado	LED	LED Pars 2
12	168	8.289	Colorado	LED	LED Pars 2
13	138	129	S4 Par		Pars 2
14	132	130	S4 Par		Pars 1
15	131	131	S4 Par		Pars 1
16	137	132	S4 Par		Pars 2

3rd LX - Universe 9

NUMBER	CHANNEL	DIMMERS	INSTRUMENT	GEL	FOCUS
1	68	9.1	36° S4 Lustr +	LED	3rd Tip SL
2	67	9.11	26° S4 Lustr +	LED	3rd Tip SL
3	78	9.21	36° S4 Lustr +	LED	3rd B/U SL
4	86	136	50° S4		3rd 50 SL

5	122	137	6" Fresnels	LV99	3rd Cool Back
6	102	9.351	6" Fresnels	LED	3rd Warm Back
7	148	139	S4 Par		Pars 3
8	209	9.253 + 1.140	Varilite TS	RGB	Back Special 7 USL
9	147	141	S4 Par		Pars 3
10	121	142	6" Fresnels	LV99	3rd Cool Back
11	101	9.361	6" Fresnels	LED	3rd Warm Back
12	146	143	S4 Par		Pars 3
13	208	9.280 + 1.144	Varilite TS	RGB	Back Special 7 USC
14	142	145	S4 Par		Pars 3
15	120	146	6" Fresnels	LV99	3rd Cool Back
16	100	9.371	6" Fresnels	LED	3rd Warm Back
17	141	148	S4 Par		Pars 3
18	207	9.307 + 1.149	Varilite TS	RGB	Back Special 7 USR
19	140	150	S4 Par		Pars 3
20	119	151	6" Fresnels	LV99	3rd Cool Back
21	99	9.381	6" Fresnels	LED	3rd Warm Back
22	83	153	50° S4		3rd 50 SR
23	74	9.31	36° S4 Lustr +	LED	3rd B/U SR
24	58	9.41	26° S4 Lustr +	LED	3rd Tip SR
25	57	9.51	36° S4 Lustr +	LED	3rd Tip SR

CYC LX - Universe 11

NUMBER	CHANNEL	DIMMERS	INSTRUMENT	GEL	FOCUS
1	196	11.334	Spectra 200 cyc	LED	LED CYC SL
2	195	11.339	Spectra 200 cyc	LED	LED CYC CSL
3	194	11.350	Spectra 200 cyc	LED	LED CYC C
4	193	11.358	Spectra 200 cyc	LED	LED CYC CSR
5	192	11.366	Spectra 200 cyc	LED	LED CYC SR

4th LX - Universe 12

NUMBER	CHANNEL	DIMMERS	INSTRUMENT	GEL	FOCUS
1	70	12.1	36° S4 Lustr +	LED	4th Tip SL
2	69	12.11	26° S4 Lustr +	LED	4th Tip SL
3	126	183	6" Fresnels	LV99	4th Cool Back
4	106	12.351	6" Fresnels	LED	4th Warm Back
5	154	184	S4 Par		Pars 4
6	89	185	19° S4		USL Back Special
7	153	186	S4 Par		Pars 4
8	125	187	6" Fresnels	LV99	4th Cool Back
9	105	12.361	6" Fresnels	LED	4th Warm Back
10	152	188	S4 Par		Pars 4
11	88	189	19° S4		USC Back Special
12	151	190	S4 Par		Pars 4
13	124	191	6" Fresnels	LV99	4th Cool Back

14	104	12.371	6" Fresnels	LED	4th Warm Back
15	150	192	S4 Par		Pars 4
17	87	193	19° S4		USR Back Special
16	149	194	S4 Par		Pars 4
18	123	195	6" Fresnels	LV99	4th Cool Back
19	103	12.381	6" Fresnels	LED	4th Warm Back
20	60	12.41	26° S4 Lustr +	LED	4th Tip SR
21	59	12.51	36° S4 Lustr +	LED	4th Tip SR

Deck - Universe 13					
NUMBER	CHANNEL	DIMMERS	INSTRUMENT	GEL	FOCUS
1	188	13.245	Spectra 100	LED	Ground Row
2	187	13.235	Spectra 100	LED	Ground Row
3	186	13.225	Spectra 100	LED	Ground Row
4	185	13.215	Spectra 100	LED	Ground Row
5	184	13.205	Spectra 100	LED	Ground Row
6	183	13.195	Spectra 100	LED	Ground Row
7	182	13.185	Spectra 100	LED	Ground Row
8	181	13.175	Spectra 100	LED	Ground Row

	Quantity	Used in House Plot	Storage Location	Extras
Strand SL zoom 15 - 32 degree	36	34	Catwalk	1
Strand SL 19 degree	0	0	NA	0
Strand SL 26 degree	0	0	NA	0
Strand SL 36 degree	0	0	NA	0
Strand SL 50 degree	0	0	NA	0
Source Four EDLT 14 degree	6	0	Shop Shelf	6
Source Four EDLT 19 degree	20	7	Shop Shelf	13
Source Four EDLT 26 degree	22	6	Shop Shelf	16
Source Four EDLT 36 degree	56	0	Shop Shelf	56
Source Four EDLT 50 degree	12	6	Shop Shelf	6
Source Four EDLT 70 degree	6	0	Shop Shelf	6
Source Four EDLT 90 degree	6	0	Shop Shelf	6
Source Four LED 19 degree	4	4	Rack	0
Source Four LED 26 degree	12	12	Rack	0
Source Four LED 36 degree	22	20	Rack	2
Strand 6" Fresnelites	40	37	Rack	3
Strand 8" Fresnelites	6	0	Studio	6
Altman Spectra Cyc 100	8	8	NA	0
Altman Spectra Cyc 200	5	5	NA	0
ETC Source Four Par	36	24	Rack	12
EC Par Can	2	0	FOH Work Light	2
Robert Juliet Roxie LED	3	3	Booth	0
Lycian 1275 Follow Spotlights	2	0	Mechanical Room 3	2
Varilite VL1000TSD	3	3	NA	0
Varilite VL1000TS	9	9	NA	0
L&E Ligthing work lights	12	12	Electrics	0
Martin Atomic 3000 strobes	2	0	Shop Shelf #3	2
Colorados	12	12	Electrics	0
Elation Opti Quad Pars - LED	10	0	Rack Base	10
Total	352	202		149
Studio Theatre				
ETC Source Four 26 degree	2	0		
ETC Source Four 36 degree	18	0		
ETC Source Four LED 50 degree	2			
EC 6" Frenels	28			
Total	50	0		
Grand Total	402			

Out of service Color



Technical Office
 Supervisor of Technical Services
 Sean Lett
 Phone: (905) 338-4162
 Fax: (905) 815-2002
 Email: slett@oakville.ca

Drawn by: Sean Devenish
 July 2nd 2021
 Scale: 1/2" = 1'-0"

House Lighting Plot

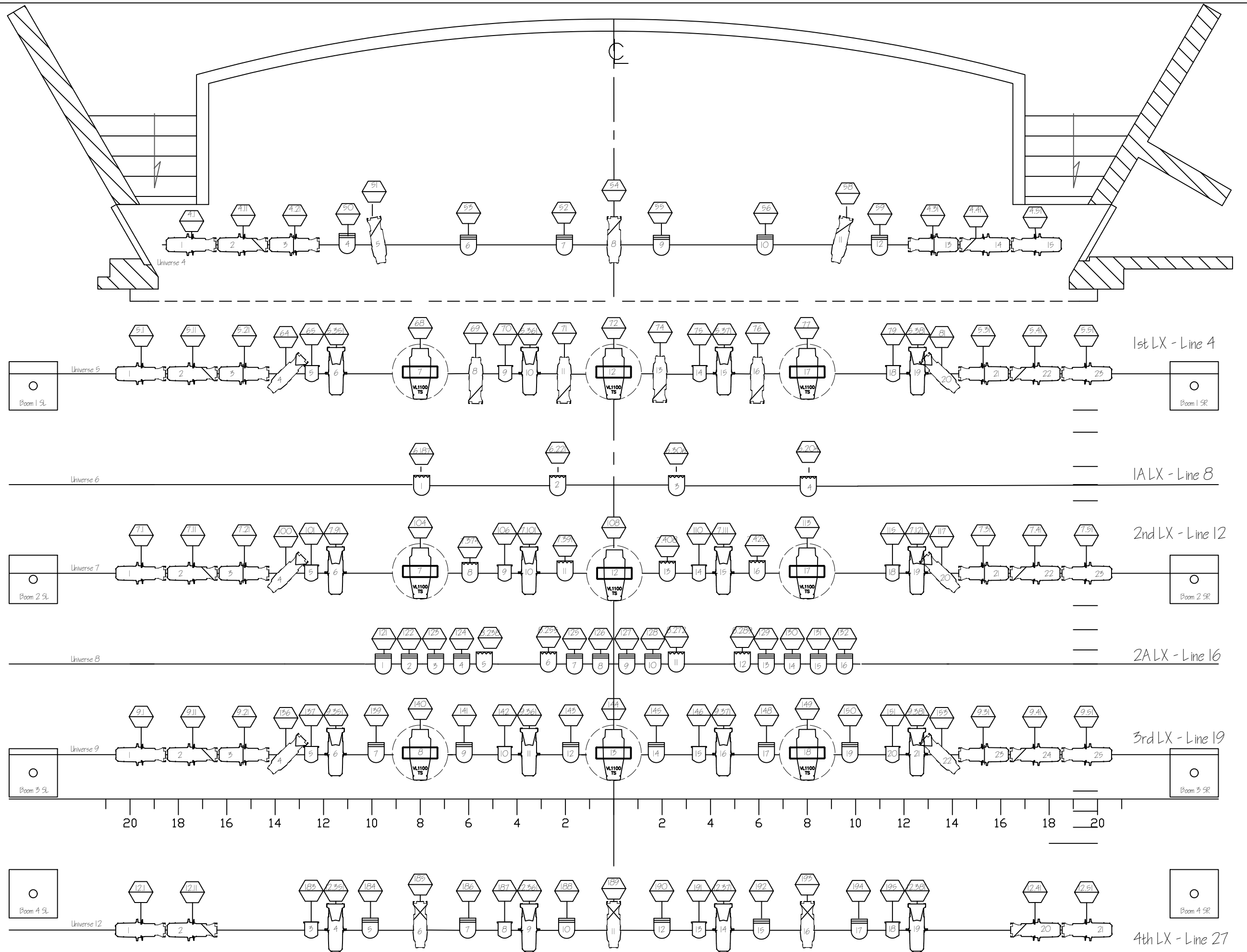
Stage

Lighting Legend

- Colorado 2-Quad Z Tour
- Source Four PAR Narrow
- 6" Fresnel
- Altman Spectra Cyc 200
- Source 4 LED Lustr+
- Source 4 Lustr2 Fresnel
- Source 4 90°
- Source 4 70°
- Source 4 50°
- Source 4 36°
- Source 4 26°
- Source 4 19°
- Source 4 14°
- Strand SL 15°-32°

- VL1100 TS/ TSD
- GLP Impression Spot One

- Circuit Number
- Channel Number
- Gobo
- Instrument Number





Technical Office
 Supervisor of Technical Services
 Sean Lett
 Phone: (905) 338-4162
 Fax: (905) 815-2002
 Email: slett@oakville.ca

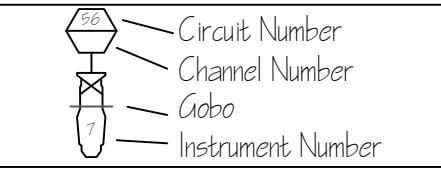
Drawn by: Sean Devenish
 December 1st 2020
 Scale: 1/2" = 1'-0"

House Lighting Plot

Booms

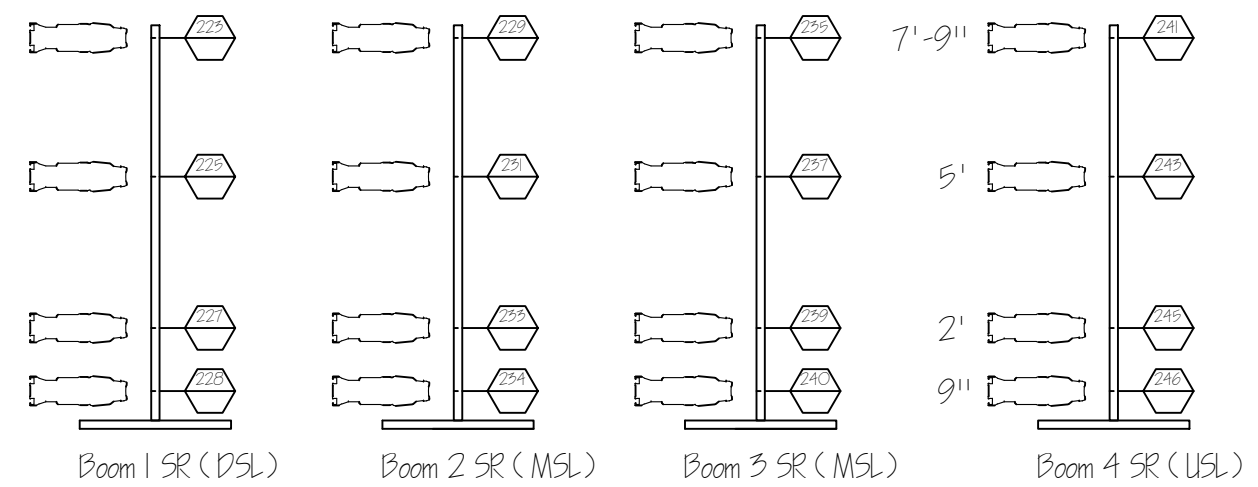
Lighting Legend

- Colorado 2-Quad Z Tour
- Source Four PAR Narrow
- 6" Fresnel
- Altman Spectra Cyc 200
- Source 4 LED Lustr+
- Source 4 Lustr2 Fresnel
- Source 4 90°
- Source 4 70°
- Source 4 50°
- Source 4 36°
- Source 4 26°
- Source 4 19°
- Source 4 14°
- Strand SL 15°-32°
- VL1100 TS/ TSD
- ALP Impression Spot One

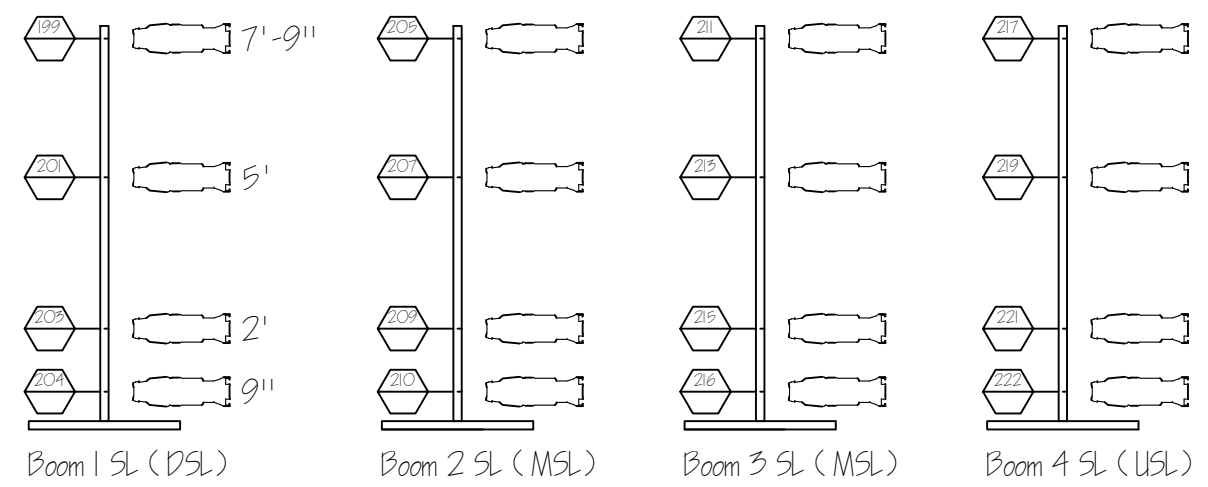


Notes About Booms:

Booms are in storage and ready to be placed. House position is not necessary, and changes may be requested.
 If you wish to use the booms you must request they are placed.
 Subsequent time may be added to accommodate the placement and focus of the booms.
 Standard placement is 24' offstage of centre, and slightly upstage of electrics to allow fly's to operate unencumbered.
 Booms do not have any house color in them. House to provide shin guards to protect the bottom lamp



Stage Right Booms/ Circuits



Stage Left Booms/ Circuits