



## AUDITORIUM TECHNICAL INFORMATION

Effective: July 2<sup>nd</sup> 2021

If this document is more than a year old please contact the technical office at (905) 338-4162 or visit [www.oakvillecentre.ca/techinfo.htm](http://www.oakvillecentre.ca/techinfo.htm)

### 1. POLICIES AND PROCEDURES

- a) All cast and crew are asked to enter and exit through the stage door at the southwest corner of the building.
- b) The stage door will be locked 15 minutes prior to the start of the performance. Alternatively clients can post security personnel at the stage door to control access.
- c) **Smoking is not permitted anywhere on the premises. This includes smoking written in the script as part of a play. Fake or unlit cigarettes should be used in their place.**
- d) **Alcoholic beverages are permitted only in licensed areas of the building. Not in the dressing rooms or on stage.**
- e) Food and beverages are not permitted on stage or in the auditorium. Water is permitted.
- f) Bulletin boards have been provided for displaying notices throughout the building. Notices taped to painted surfaces will be removed.
- g) A working Technical Supervisor is provided with every booking. Additional technical staff maybe arranged through the technical office with 2 weeks prior notice.
- h) Additional equipment and gobos can be provided with 2 weeks' notice at an additional charge.
- i) The fire curtain line must be able to be cleared within three minutes at any time during an event.
- j) The use of flammable solvents, open flame, or fire is not allowed on the premises without written permission from the Oakville Fire department.
- k) Only personnel authorized by the Technical Supervisor are permitted to operate Oakville Centre equipment; including the fly system and scissor lift.
- l) All touring crew and stagehands are required to wear safety footwear on stage and in the loading areas during all load ins, set ups and strikes. Other PPE as necessary may be issued by the Supervisor on duty.
- m) Nailing, screwing or stapling to the stage floor is prohibited.
- n) The auditorium must be completely cleared of all personnel 30 minutes prior to the performance. The Technical Supervisor will act as liaison with the House Manager to open the house and will be notified by the House Manager when the house is in.
- o) In order to arrange tuning, we require two weeks' notice if you intend to use one of our pianos.
- p) Any production planning on using pyrotechnics must contact the technical office a minimum of 2 weeks (4 weeks is recommended) prior to the load in of the production. The Authority Having Jurisdiction in Oakville is the Oakville Fire Department.
- q) Any production planning on using auxiliary power must contact the technical department at least 2 weeks prior to the load in so that an electrician and ESA permits can be arranged.
- r) Any production planning on flying any scenic elements must provide details to the technical office at least 2 weeks prior to the load in.

- s) The Oakville Centre requires that a house announcement be made at the start of every show stating that the use of flash photography and recording devices is strictly prohibited as well as a reminder to silence all electronic devices.
- t) All belongings, set pieces and equipment must be removed at the end of the booking unless cleared with the technical department 1 week in advance. Additional cost may be incurred.
- u) The Oakville Centre will not fly performers in the theatre. If you are considering flying performers contact the theatre immediately.
- v) Persons needing wheel chair access to the stage should contact the theatre in advance of booking the theatre.
- w) Productions intending to use live animals in a performance must obtain a permit from the Town of Oakville. See Schedule 3 by-law number [2008-093](#). Please see the [permit application](#) for more information.
- x) Videotaping of performances must take place in prearranged locations in the auditorium or Studio. Cameras must remain in a fixed location **at all times** when there is an audience in the room.
- y) Wireless internet access is available in the building at no charge. It is subject to the internet access policy of the Town of Oakville and can be restrictive.

## 2. STAGE ACCESSORIES

Skyjack SJIII 3219 scissor lift  
 6', 8', 10', & 12' step ladders  
 12 - 4' x 8' x 6" risers riser legs are available – contact the technical department for details.  
 4 - 4' x 4' x 6" risers  
 4 - 2' x 8' x 6" risers  
 Wenger Diva concert shell – walls only no ceiling panels  
 50 Manhasset music stands  
 36 Manhasset music stand lights  
 70 Wenger Musician chairs black - straight back & armless  
 4 black wooden stools 30" tall  
 48" Clearsonic drum shield - 5 panels  
 4 rubber backed dark grey carpets 4' x 8'  
 2 Lecterns – solid oak with Littlelite and Countryman Isomax 4 microphone  
 1 Steinway Model D 9' concert grand piano on stage only  
 1 Kawai upright piano located in the orchestra pit.  
**Additional charge applies for mandatory tuning of piano prior to use.**  
 1 Roland RD800 stage piano  
 1 Fender '65 Twin Reverb guitar amplifier  
 1 Gallien-Krueger 1001RB-II bass amplifier & Gallien-Krueger 410RBH bass amplifier cabinet  
 1 Yamaha Absolute Hybrid Maple 5 piece drum set with Zildjian A cymbal set  
 5 rolls Harlequin Reversible black / grey dance floor (approx 44' x 2m per roll)  
 2 Ultratec Radiance Haze Machines **(additional charge applies)**  
 2 Ultratec Premier Fog Machines **(additional charge applies)**

## 3. WARDROBE

Laundry facilities are available at the theatre.  
 The theatre has an iron, ironing board and professional steamer.

## 4. STAGE DIMENSIONS

|  |           |            |
|--|-----------|------------|
| Proscenium opening                     | width 38' | height 18' |
| Stage depth from apron to cyc          | 40'       |            |
| Stage depth from apron to main curtain | 11'       |            |
| Stage right wing space                 | 10'       |            |
| Stage left wing space                  | 25'       |            |

The loading dock is located upstage left at stage level. It is truck bed height.  
 The door is 10' wide x 11'6" high

## 5. LIGHTING

**There is a house lighting plot. Please see drawing for details. Please note that booms are not normally included in the house lighting plot.**

### a) Control

MA Lighting grandMA2 light with fader wing  
MA Lighting onPC backup  
DMX is distributed throughout the room using 2 Pathways Octo Nodes  
288 Strand C21 dimmers (dimmer per circuit)  
Dimmers reside on sACN network.  
Guest console access to the lighting network is provided through a Pathways Quattro node.

### b) Circuits

All circuits are 20A 125V new style twistlock.  
31 in the Front of House, 6 in SL box boom, 6 in SR box boom  
10 on Concert pipe  
24 on 1st electric           line set # 4  
24 on 2nd electric           line set # 12  
24 on 3rd electric           line set # 19  
12 on cyc electric           line set # 23  
18 on 4th electric           line set # 27  
32 on floor, 2 in the orchestra pit  
60 circuits stage left wall at 22' AFF – 10 socapex  
24 circuits stage right on cable drops from grid – 4 socapex  
1 circuit on each electric is reserved for work lights

### c) Instruments

|   |        |                                     |
|---|--------|-------------------------------------|
| 33 Strand SL zoom 15-32 degree            | 575 W  | located in the FOH catwalk only     |
| 6 ETC Source Four 14 degree               | 750 W  |                                     |
| 20 ETC Source Four 19 degree              | 750 W  | (4 permanently located in box boom) |
| 20 ETC Source Four 26 degree              | 750 W  | (2 permanently located in box boom) |
| 56 ETC Source Four 36 degree              | 750 W  |                                     |
| 12 ETC Source Four 50 degree              | 750 W  |                                     |
| 6 ETC Source Four 70 degree               | 750 W  |                                     |
| 6 ETC Source Four 90 degree               | 750 W  |                                     |
| 4 ETC Source Four Lustr+ 19 degree        | LED    | (4 permanently located in box boom) |
| 12 ETC Source Four Lustr+ 26 degree       | LED    | (2 permanently located in box boom) |
| 20 ETC Source Four Lustr+ 36 degree       | LED    |                                     |
| 16 ETC LED Series 2 Tungsten HD           | LED    | Barn doors for each                 |
| 24 Selecon 7" Rama Fresnels               | 1 kW   | c/w barn doors                      |
| 36 ETC Source Four Pars                   | 750 W  | normally narrow lenses              |
| 5 Altman Spectra Cyc 200                  | LED    | cyc lights (line set #23)           |
| 8 Altman Spectra Cyc 100                  | LED    | ground row                          |
| 9 Vari*lite VL1100TS moving lights        | 1200 W |                                     |
| 3 Vari*lite VL1100TSD moving lights       | 1200 W | located on FOH winch ONLY           |
| 2 Robert Juliat Roxie followspots         | LED    | located in booth only               |
| 2 Arri 3" Fresnels                        | 300 W  | c/w barn doors                      |
| 2 Martin Atomic 3000 strobe lights        |        |                                     |
| 2 Chauvet black lights                    | LED    |                                     |
| 12 Chauvet COLORado 2-Quad Zoom Tour pars | LED    |                                     |
| 8 Astera 3 Wireless LED Pars              | LED    | Wireless DMX and battery powered    |

Please note that all ETC Source Four lens tubes are the EDLT version.

### d) Colour Media

We stock all Roscolux 2 digit and 3 digit colours.

**e) Auxiliary Power**

- 400A 3 phase 5 wire Down Stage Left with Cam-lock connectors
- 200A 3 phase 5 wire Down Stage Left with Cam-lock connectors
- 200A 3 phase 5 wire Down Stage Right
- 100A 3 phase 5 wire Up Stage Centre with Cam-lock connectors

**\*All Single Pin Electrical Tie-Ins require ESA Inspection At Additional Cost**

**f) Accessories**

- 10 - 8' or 12' Boom Stands
- 12 - Floor Plates
- 1 mirror ball 20" with American DJ DMX controlled mirror ball motor
- 2 Diversitronics ESM-DMX Strobe caps for ETC Source Fours ellipsoidal fixtures
- 12 City Theatrical drop in iris for ETC Source Fours (#2180)
- 6 City Theatrical drop in iris for Strand SL's (#2186)
- 24 A size City theatrical sandwich gobo holders (#2150)
- 24 B size City theatrical sandwich gobo holders (#2160)
- 24 A size City theatrical tab gobo holders (#2050)
- 24 B size City theatrical tab gobo holders (#2060)
- 12 B size City Theatrical glass gobo holders (#2173)

## 6. AUDIO

### a) Front of House Mix Position

Digico SD12 Digital mixing console located in the rear of the theatre only  
2 Denon DN-700C CD players

### b) Booth

Digico S21 Digital mixing console with Dante card. 32 inputs from stage  
2 Denon DN-700C CD players  
1 HHB CDR 830 BurnIT Plus CD recorder

### c) Speaker System

The main speaker system is a flown d&b audiotechnik speaker system consisting of a T-Series centre line array (7 Ti10 speakers) with Q-Series fill boxes on each side (1 Qi7 and 1 Qi10 speaker per side). There are two (2) 27A subwoofers permanently mounted in the ceiling. There are seven (7) E5 speakers cut into the front edge of the stage as front fill. If required, there are two (2) V-SUB subwoofers that can be placed on each set of stairs to the house on either side of the stage. BSS Soundweb London (blue) controls all processing, time alignment and EQ. The speaker system has been setup using SIA Smaart Live. Speakers are powered by d&b d80 and d6 amplifiers.

### d) Monitor System

Digico SD12 Digital mixing console  
10 d&b audiotechnik M6 monitors  
2 d&b audiotechnik M4 monitors  
3 d&b audiotechnik d80 amplifiers  
2 JBL PRX715XLF self powered subwoofer  
4 JBL PRX712 speakers  
1 Radial Engineering 56 channel Convertible V12 Modular 3 way mic split  
Standard configuration is 11 mixes plus a listen mix.  
Normal setup is stage right  
6 Sennheiser 2000 wireless in-ear monitor transmitters (**additional charge applies**)  
6 Sennheiser EK2000 c/w IE-4 earphones

### e) Microphones

4 AKG C414 XLS (2 stereo matched pairs)  
2 AKG C451E with CK1 capsules  
4 AKG C391B  
1 AKG D112  
3 Audio Technica ATM 25  
3 Audio Technica AT 4033  
3 Crown PCC 160  
4 Neumann KM184  
6 Sennheiser MD 421-II  
2 Sennheiser MD 441  
2 Sennheiser e 609  
1 Sennheiser e 901  
2 Sennheiser e 902  
8 Sennheiser e 904  
4 Sennheiser e965  
1 Shure Beta 52  
4 Shure Beta 57  
4 Shure SM 57  
4 Shure Beta 58  
2 Shure SM 58  
1 Shure Beta 91  
4 Shure Beta 98 D/S  
1 Helpinstill Model 180 piano sensor installed in the Yamaha Grand CFIII 9' piano

**f) DI's**

12 Countryman Type 85 active DI's  
4 Countryman Type 85S active stereo DI  
2 Passive DI's

**g) Wireless Microphones**

12 Sennheiser 2000 wireless receivers (**additional charge applies**)  
8 Sennheiser SKM 2000 c/w e965 capsule handheld transmitters  
12 Sennheiser SK 2000 wireless belt packs  
12 Countryman E6 headset mics for Sennheiser SK 2000 wireless belt packs  
8 Sennheiser MKE – 2 Gold lavalier microphones for Sennheiser SK 2000 wireless belt packs

**h) Microphone Stands**

18 K&M tall boom stands (black)  
8 K&M short boom stands (black)  
6 K&M round base stands (black)

**i) Program Sound and Paging**

Paging is available from stage right and the booth.  
Monitors are located in each dressing room, hallway, green room, technical office & control booth

**j) Intercom**

PS464 Clearcom power supply 4 channel main station (located in the booth)  
2 Remote stations (located stage right & at the lighting console)  
Clearcom Freespeak II wireless intercom with 6 beltpacks  
8 Clearcom belt packs  
8 DT108 Beyer Headsets  
2 Clearcom HS-6 handsets

**k) Power**

Technical power is provided specifically for the audio system  
60 amp 3 phase disconnect c/w camlocks located upstage centre  
2 – 20 amp 125/250 volt circuits are available stage right and stage left for monitor racks.  
15 amp 125 volt circuits and 20 amp 125 volt circuits are also available.

**7. VIDEO EQUIPMENT**

**a) Video Projectors**

Christie Digital Roadster HD10K-M 1080 HD DLP projector (11,000 lumens) c/w Hanging frame  
Christie Digital Lens ILS 1.16-1.49HD  
or Christie Digital Lens ILS 1.8-2.6HD

**b) Screens**

10' x 18' Draper Truss-style Cinefold with front or rear projection surface

**c) Playback**

2 Denon DN-500BD Blu-ray players

## 8. FLY SYSTEM

### a) Line Set Schedule

| Line | Description                    | Notes                    | Height<br>in feet | Width<br>in feet | Distance to<br>plaster line |
|------|--------------------------------|--------------------------|-------------------|------------------|-----------------------------|
| 0    | Fire curtain                   |                          |                   |                  |                             |
| 1    | Main curtain 50% fullness      | Flies only – burgundy    | 22                | 46               | 0' 9"                       |
| 2    | 1 Border                       |                          | 7                 | 48               | 1' 7"                       |
| 3    | 1 Leg - 2 panels 50% fullness  |                          | 24                | 12               | 2' 1"                       |
| 4    | 1 Electric                     | Truss batten             |                   |                  | 3' 0"                       |
| 5    | Spare                          |                          |                   |                  | 4' 6"                       |
| 6    | Spare                          |                          |                   |                  | 5' 5"                       |
| 7    | Spare                          |                          |                   |                  | 6' 10"                      |
| 8    | Spare                          | Truss batten             |                   |                  | 7' 7"                       |
| 9    | Spare                          |                          |                   |                  | 8' 3"                       |
| 10   | 2 Border                       |                          | 12                | 48               | 9' 1"                       |
| 11   | 2 Leg - 2 panels 50% fullness  |                          | 24                | 16               | 9' 10"                      |
| 12   | 2 Electric                     | Truss batten             |                   |                  | 11' 3"                      |
| 13   | Midstage traveler 50% fullness | Travels from stage right | 24                | 46               | 12' 8"                      |
| 14   | Spare                          |                          |                   |                  | 13' 7"                      |
| 15   | Spare                          |                          |                   |                  | 14' 5"                      |
| 16   | Spare                          | Truss batten             |                   |                  | 15' 0"                      |
| 17   | 3 Border                       |                          | 12                | 48               | 16' 9"                      |
| 18   | 3 Leg - 2 panels 50% fullness  |                          | 24                | 16               | 17' 7"                      |
| 19   | 3 Electric                     | Truss batten             |                   |                  | 18' 9"                      |
| 20   | Spare                          |                          |                   |                  | 20' 3"                      |
| 21   | Spare                          | Truss batten             |                   |                  | 21' 1"                      |
| 22   | 4 Border                       |                          | 12                | 48               | 21' 9"                      |
| 23   | Cyclorama electric             | Truss batten             |                   |                  | 22' 5"                      |
| 24   | Stage right up/down (German)   | Truss batten             |                   |                  |                             |
| 25   | 4 Legs - 2 panels 50% fullness |                          | 24                | 16               | 23' 8"                      |
| 26   | Spare                          |                          |                   |                  | 24' 5"                      |
| 27   | 4 Electric                     | Truss batten             |                   |                  | 26' 0"                      |
| 28   | Upstage traveler 50% fullness  | Travels from stage right | 24                | 48               | 27' 0"                      |
| 29   | Spare                          |                          |                   |                  | 27' 10"                     |
| 30   | Spare                          |                          |                   |                  | 28' 8"                      |
| 31   | Cyclorama / White Scrim        | Scrim is hung downstage  | 24                | 46               | 29' 6"                      |
| 32   | Stage left up/down (German)    | Truss batten             |                   |                  |                             |
|      | Unobstructed upstage wall      |                          |                   |                  | 32'0"                       |

All drapery is 25 ounce black velour unless otherwise specified.

The cyclorama is white PVC with a white sharks tooth scrim hung on the same line set.

Maximum production payload per line-set: 1000lb (250lb single point)

Operating gallery is at stage level stage right.

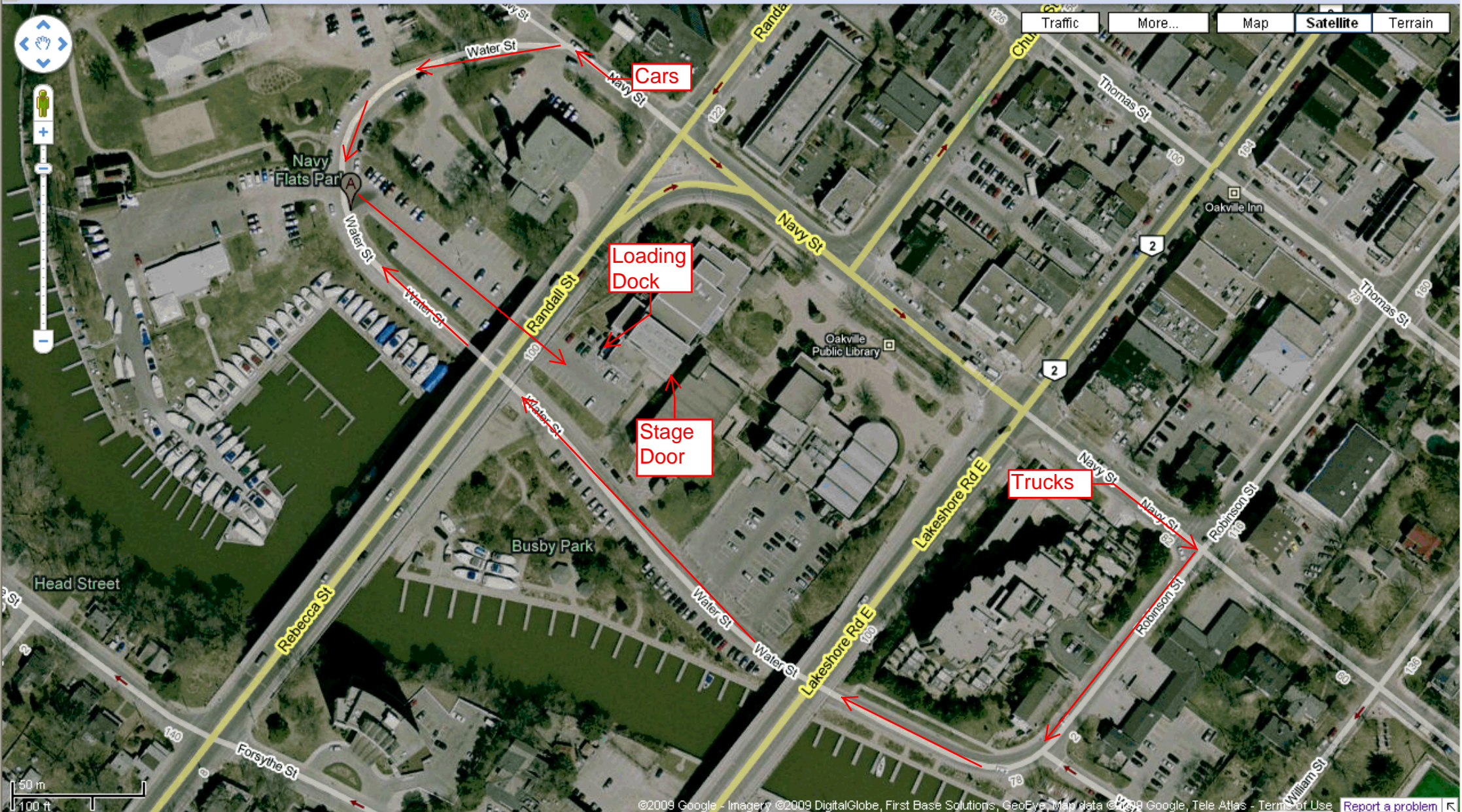
### b) Extra Drapery

|               |   |
|---------------|---|
| Borders       | 2 - 8' h x 48' w black velour no fullness                   |
| Legs          | 1 pair - each panel 24' h x 12' w black velour 50% fullness |
| Scrim         | 1 - 22' h x 48' w sharks tooth black                        |
| Blackout drop | 2 - 22' h x 24' w black velour no fullness                  |
| Silks         | 6 - 28' h x 5' w white silk drapes                          |

### c) Rigging Information

A mesh grid allows for spot lines in only 4 positions on the horizontal plane of the stage, 22' 8" & 7'8" stage left of centre and 7'4" & 22'4" stage right of centre.

The theatre owns 12 - 1 ton beam clamps for hanging points.





**Oakville Centre  
130 Navy Street  
Oakville, Ontario  
L6J 2Z4  
Technical Office 905-338-4162**

**Directions to the loading dock and stage door.**

QEW to Trafalgar Road South

Trafalgar to Randall Street. Turn right

Randall to Navy St. (stop light)

The Oakville Centre is on the left but turn right and loop down under the bridge to the blue loading dock doors.

The **stage door** is located to the right hand side of the rear of the building.

**Directions to the loading dock for Heavy Trucks (registered gross vehicle weight greater than 5 metric tonnes)**

QEW to Dorval Drive South

Dorval Drive to Rebecca Street. (stop light) Turn left.

Rebecca Street to Navy Street South. Turn right. (You have no choice).

Navy Street South past the theatre to Robinson Street (First street past Lakeshore Road)

Turn right. Stay right as it becomes Water Street.

Once you have passed the theatre turn right into the parking lot and proceed under the bridge to the blue loading dock doors.

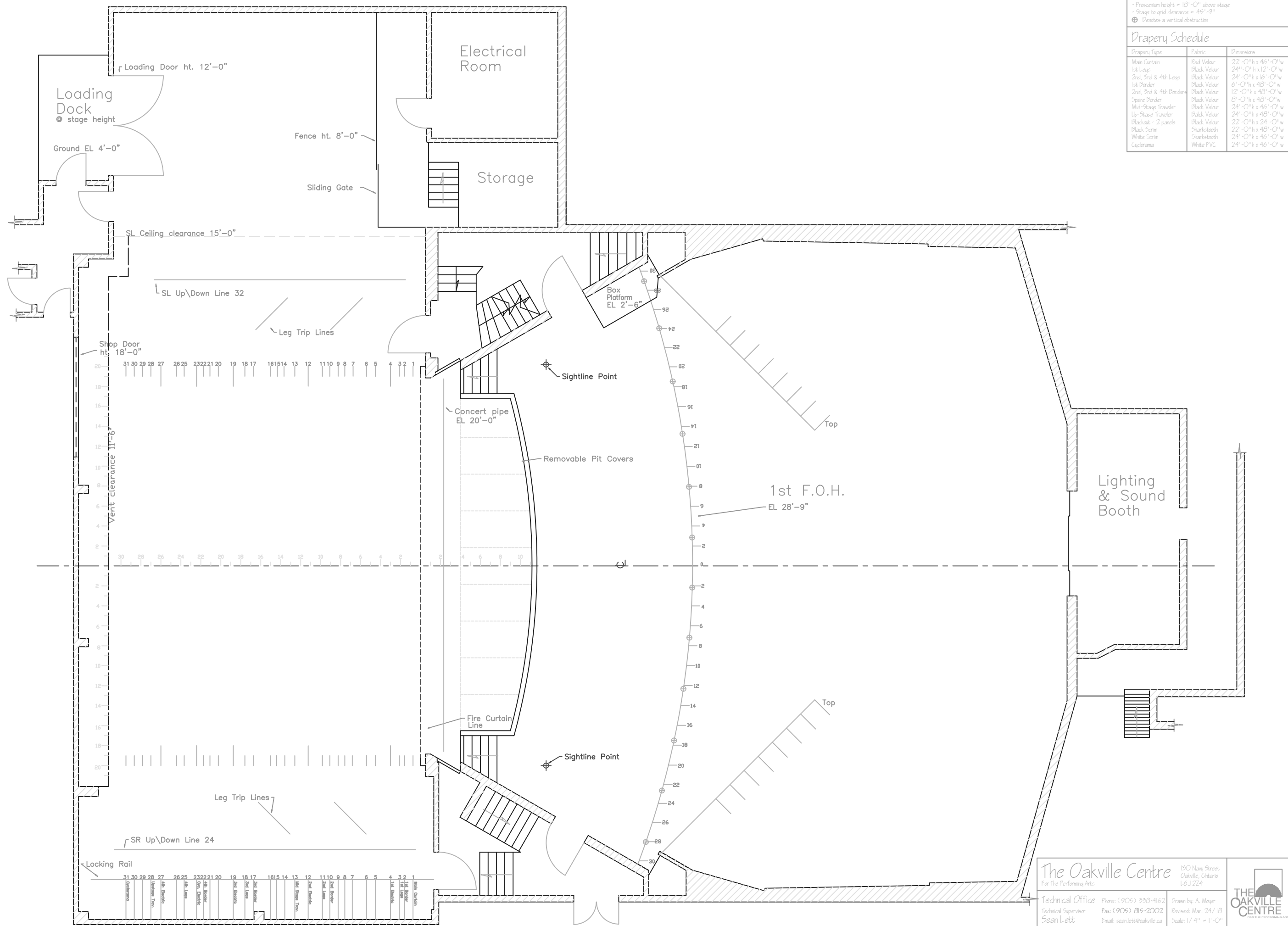
It is best to reverse down the parking lot to back into the loading dock.

**Please search Navy Flats Park in Oakville for proper Google Maps location.**

**Searching the Oakville Centre gets you to the front door not the loading dock and stage**

Notes  
 - Proscenium height = 18'-0" above stage  
 - Stage to grid clearance = 45'-9"  
 ⊕ Denotes a vertical obstruction

| Drapery Schedule       |              |                     |
|------------------------|--------------|---------------------|
| Drapery Type           | Fabric       | Dimensions          |
| Main Curtain           | Red Velour   | 22'-0" h x 46'-0" w |
| 1st Leas               | Black Velour | 24"-0" h x 12'-0" w |
| 2nd, 3rd & 4th Leas    | Black Velour | 24'-0" h x 16'-0" w |
| 1st Border             | Black Velour | 6'-0" h x 48'-0" w  |
| 2nd, 3rd & 4th Borders | Black Velour | 12'-0" h x 48'-0" w |
| Spare Border           | Black Velour | 6'-0" h x 48'-0" w  |
| Mid-Stage Traveler     | Black Velour | 24'-0" h x 46'-0" w |
| Up-Stage Traveler      | Black Velour | 24'-0" h x 48'-0" w |
| Blackout - 2 panels    | Black Velour | 22'-0" h x 24'-0" w |
| Black Scrim            | Sharktooth   | 22'-0" h x 48'-0" w |
| White Scrim            | Sharktooth   | 24'-0" h x 46'-0" w |
| Cyclorama              | White PVC    | 24'-0" h x 46'-0" w |



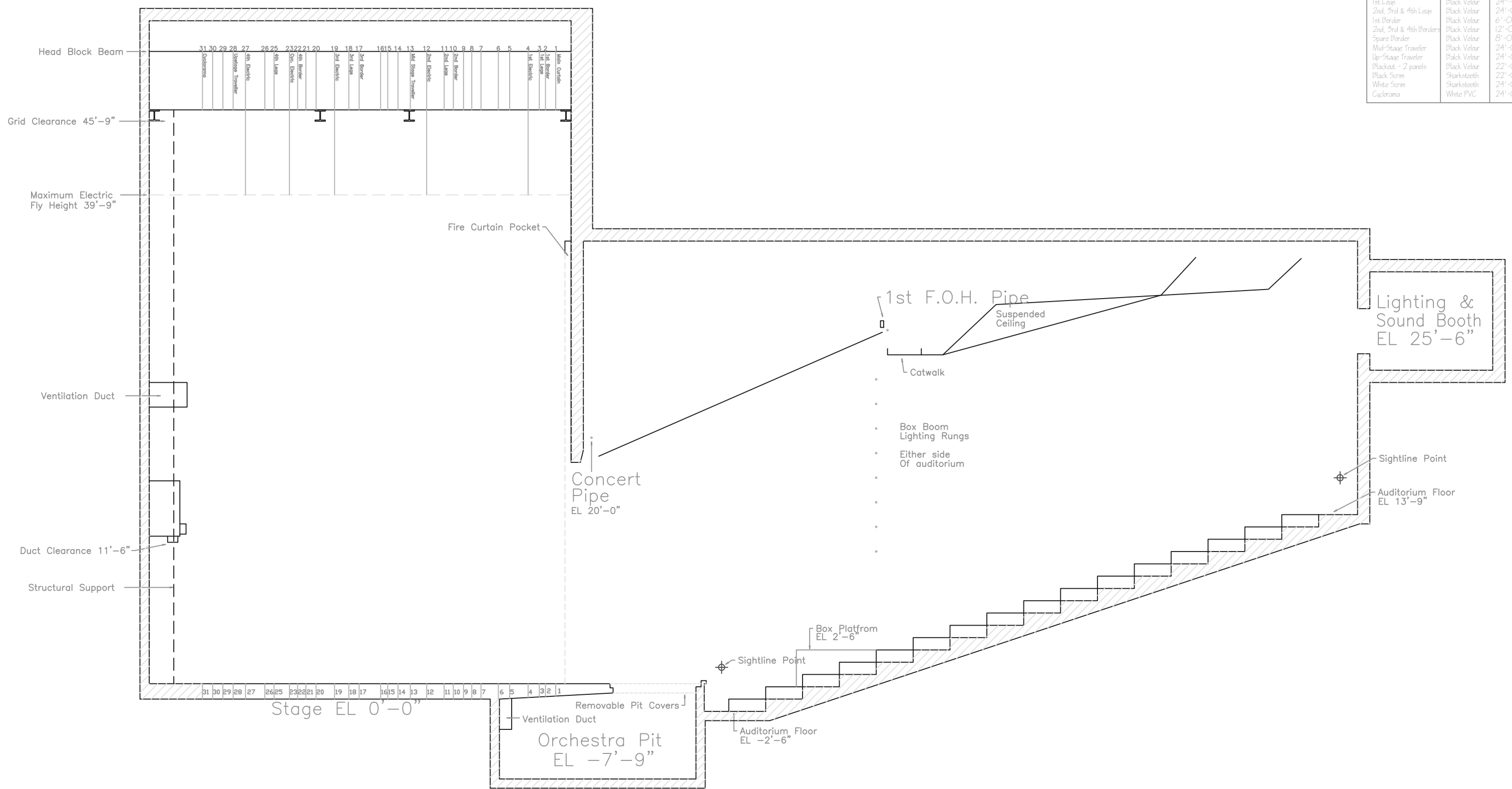
**The Oakville Centre** 150 Navy Street, Oakville, Ontario L6J 2Z4  
 For The Performing Arts

Technical Office: Phone: (905) 558-4162, Fax: (905) 815-2002, Email: sean.lett@oakville.ca  
 Technical Supervisor: Sean Lett  
 Drawn by: A. Mayer, Revised: Mar. 24/18, Scale: 1/4" = 1'-0"  
 Theatre Plan Drawing #1

**Notes**  
 - All elevations taken from stage level  
 - Proscenium height = 18'-0" above stage  
 - Stage to grid clearance = 45'-9"

**Draper Schedule**

| Draper Type            | Fabric       | Dimensions          |
|------------------------|--------------|---------------------|
| Main Curtain           | Red Velour   | 22'-0" h x 46'-0" w |
| 1st Loop               | Black Velour | 24"-0" h x 12'-0" w |
| 2nd, 3rd & 4th Loops   | Black Velour | 24"-0" h x 16'-0" w |
| 1st Border             | Black Velour | 6'-0" h x 48'-0" w  |
| 2nd, 3rd & 4th Borders | Black Velour | 12'-0" h x 48'-0" w |
| Spare Border           | Black Velour | 8'-0" h x 48'-0" w  |
| Mid-Stage Traveler     | Black Velour | 24'-0" h x 46'-0" w |
| Up-Stage Traveler      | Black Velour | 24'-0" h x 48'-0" w |
| Blackout - 2 panels    | Black Velour | 22'-0" h x 24'-0" w |
| Black Scrim            | Sharktooth   | 22'-0" h x 48'-0" w |
| White Scrim            | Sharktooth   | 24'-0" h x 46'-0" w |
| Cyclorama              | White PVC    | 24'-0" h x 46'-0" w |



**The Oakville Centre**  
 For The Performing Arts  
 130 Navy Street  
 Oakville, Ontario  
 L6J 2Z4

Technical Office Phone: (905) 338-4162  
 Technical Supervisor Fax: (905) 815-2002  
 Sean Lett Email: sean.lett@oakville.ca

Drawn by: A. Mayer  
 Revised: Mar. 24/18  
 Scale: 1/4" = 1'-0"

**THE OAKVILLE CENTRE**  
 FOR THE PERFORMING ARTS

Theatre Section Drawing #2